

Ricoh Aficio MP 5500/MP 6500/MP 7500
Digital Imaging Systems
Now you're ready for business.

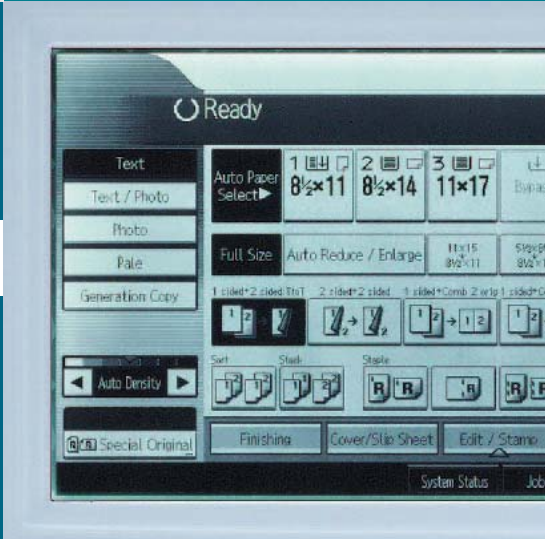
RICOH



fast



professional



secure



Versatile Productive Reliable Efficient

Professional production plus versatile functionality.

Cover Interposer – Optional:

The Interposer makes it easy to add covers and inserts—including full color—into your jobs.

Automatic Document Feeder –

Standard: Scan up to 75 images per minute through the single-pass document feeder.

Intuitive Control Panel:

The user-friendly LCD panel offers a large display with easy job programming for copy, print, scan, store and finishing functions.

2,000-sheet Booklet Finisher with 50-sheet Stapler – Optional

Tandem Paper Tray –

Optional: The tandem paper tray holds 1,550 sheets in each of the two compartments for a total of 3,100 sheets.

Two 550-sheet Paper Trays and Bypass – Standard:

Dual front-loading paper trays, the 100-sheet Stack Bypass and the tandem tray provide a standard 4,300-sheet paper capacity.

Large Capacity Tray – Optional:

The optional LCT holds 4,000 sheets, providing a paper capacity of 8,300 sheets.

Base System:

55 pages per minute
65 pages per minute
75 pages per minute

Match your specific needs and configure the Ricoh Aficio MP 5500/MP 6500/MP 7500 Series *your way.*



The Ricoh Aficio MP 5500 prints at 55 pages per minute.



The Ricoh Aficio MP 6500, shown with the 50-sheet Staple Finisher, prints at 65 pages per minute.



The Ricoh Aficio MP 7500, shown with the 100-sheet Staple Finisher, Cover Interposer and Large Capacity Tray, prints at 75 pages per minute.

Ricoh Aficio MP 5500/MP 6500/MP 7500

Exceptionally fast, sophisticated systems that are all business. Introducing the RICOH® Aficio® MP 5500/MP 6500/MP 7500 Digital Imaging Systems. Fast, secure and state-of-the-art in every important function, these systems are loaded with everything you need to ensure your document workflow remains on the cutting edge of technology.



Versatile Productive Reliable Efficient

User-Friendly Operation

Ricoh Aficio MP 5500/MP 6500/MP 7500 systems offer easy-to-use features that save time and help make operation simple.

- Easy-to-read display: No more wasting time trying to read small type. The large WVGA operation panel makes it fast and easy to select your job parameters and quickly get back to work.
- Shortcuts to productivity: There's nothing like a shortcut to save you time and energy. The login/logout button cuts through the standard menu pages to get you started and finished faster.
- Simplifying the complex: Another user-friendly shortcut is Refined Print Command Stream (RPCS™). Once you've established a step-by-step process for finishing a particular job—no matter how many steps it takes—you simply program them into a single icon on the display. Next time you run the job, just select the icon and your entire multi-step job will begin at once.

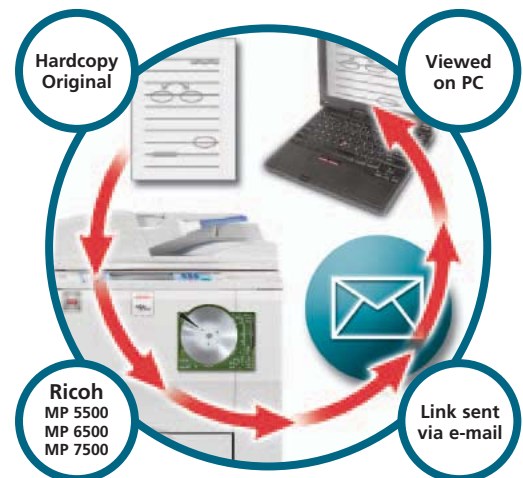


The highly reliable, single-pass document feeder is capable of scanning up to 75 images per minute.

Fast, Efficient Distribution

Every tool you'll need to get documents where they need to go—quickly, easily and cost effectively.

- Find your recipients' e-mail addresses faster by quickly accessing and searching your own corporate database through the standard Lightweight Directory Access Control (LDAP).
- Confirm the content of your documents before printing from the Document Server with File Preview, eliminating errors and waste.
- Stay at your desk and manage electronic files with DeskTopBinder™. For example, you can use this software to merge Word and Excel files to create a powerful sales report.
- Reduce network traffic, improve information sharing and put your people back in charge of their e-mail. Scan-to-URL allows you to send URL links to documents stored on the system's hard drive rather than sending all the files. So recipients within the LAN/WAN can decide if and when they want to access e-mailed files—rather than having attachments overload their e-mail in-boxes every time they log on to the network.



Transmit scanned data without burdening the network using Scan-to-URL.

Your Business is Nobody Else's Business

Ricoh Aficio MP 5500/MP 6500/MP 7500 systems safeguard information at every point in the copying, printing, transmission and distribution process.

- Safeguard your confidential information with Unauthorized Copy Control, which protects sensitive documents with an embedded message that appears if a document is copied.
- Give your sensitive PDFs an extra measure of protection by assigning passwords for access that only intended recipients know.
- Restrict access to system features such as copying, printing, scanning or accessing the document server and eliminate "from field" spoofing, ensuring the authenticity of received e-mails.
- Remove the security risk of "latent images" on the internal hard drive through the DataOverwriteSecurity System (DOSS), making any effort to access and reconstruct residual image data virtually impossible.
- Authenticate individual users with up to 500 unique codes, preventing unauthorized use of your system.
- Attain the ultimate in data security after hours by storing the optional Removable Hard Drive in a secure location.



Output 2- or 3-hole punched documents, mixed originals, colored covers, and much more.

The Perfect Finish

Your documents say a lot about your organization. Make them look as professional as possible with the advanced capabilities of the Ricoh Aficio MP 5500/MP 6500/MP 7500 systems.

- Print booklets: Nothing makes a better impression than presenting your work in saddle-stitched booklets, and Ricoh Aficio MP 5500/MP 6500/MP 7500 systems bring this capability in-house—cutting costs and saving time.
- Add covers: Why should covers be so difficult to put on your documents? With the interposer, adding covers to your work could become as regular a part of your document preparation routine as stapling.
- Staple thick documents: Long documents are often a problem with many MFPs. That's what makes the 100-sheet finisher a productive necessity.
- Create Z-folds: Large, over-sized documents are awkward to handle. Cut them down to convenient size instantly with the Ricoh Aficio MP 5500/MP 6500/MP 7500 systems' Z-fold unit.
- Produce expertly hole-punched documents: With GBC StreamPunch III, create professionally printed, punched and ready-to-bind documents in one easy step.

Customize Your System

You can further enhance your organization's workflow by developing your own customized applications to run on Ricoh Aficio MP 5500/MP 6500/MP 7500 systems. Their innovative Java (J2ME)-compatible software development platform can easily be customized to control the operation panel, printing, saving files, scanning and other functions.

Remote Management

The optional @Remote Intelligent Remote Management System automatically reports meter usage data, freeing you to focus on getting your work out, instead of worrying about collecting and reporting the machine's usage.

Do More with DocumentMall

DocumentMall lets users securely store, edit, share and retrieve documents and files from their PCs via the Internet. Plus, they can securely scan hardcopy documents directly from their Ricoh MFPs. This powerful document management application is accessible 24/7 and provides businesses with a managed and hosted off-site environment that allows knowledge workers in remote locations to collaborate in real time and in a secure environment. Advanced search and indexing capabilities and virtually unlimited scalability means businesses of any size can use DocumentMall as a versatile resource.



Your Environmental Partner



Ricoh Aficio MP 5500/MP 6500/MP 7500 systems are ENERGY STAR® qualified, continuing our long-standing commitment to developing office solutions with environmentally friendly and superior energy- and supply-saving features, including:

- 30-second, Quick Start-up (QSU) Technology
- Power-saving Sleep Modes
- Duplex and Combine Copy Modes
- Toner Recycling
- Low Noise Levels
- Minimal Ozone Emissions
- RoHS (Restriction of Hazardous Substances) Compliant

Ricoh Aficio MP 5500/MP 6500/MP 7500

System Specifications

General Specifications

Printing Process	Four laser beams and electro-photographic printing
Configuration	Console
Memory (RAM)	Basic Models: 256MB std/512MB max S/P Models: 512MB std/max
HDD	80GB
First Copy Time	MP 5500: 4.2 seconds MP 6500/MP 7500: 3.5 seconds
Warm Up Time	30 seconds from power off
Copy Speed	55/65/75 copies/minute multiple sets (Letter LEF)
Original Type	Book/Sheet/Object
Original Size	Up to 11" x 17" (12" x 18" using platen)
Copy Size	5.5" x 8.5" – 11" x 17" (12" x 18" via bypass)
Copy Resolution	True 1200 x 1200 dpi
Grayscale	256 levels
Reproduction Ratios	25%, 50%, 65%, 73%, 78%, 85%, 93%, 121%, 129%, 155%, 200%, 400%
Zoom	25% – 400% in 1% increments
Paper Feed	Standard: Tray 1: 1,550 sheets x 2 (tandem) = 3,100 (Letter); Trays 2 & 3: 550 sheets each (user adjustable) Bypass: 100 sheets Total Standard/Max: 4,300/8,300 sheets
Paper Weight	Trays 1 – 3: 14 lb. – 34 lb. Bond; Bypass (Thick Paper Mode): 14 lb. Bond – 110 lb. Index (216 g/m ²)
Quantity Indicator	1 – 999
Power Source	120V/60Hz/20A (Requires dedicated 20A outlet)
Dimensions (WxDxH) Weight	27.2" x 31.1" x 45.9" 454 lbs.

System Accessories

Automatic Document Feeder (Standard)	
Original Size	5.5" x 8.5" – 11" x 17"
Paper Weight	Simplex: 11 lb. – 34 lb. Bond Duplex: 14 lb. – 34 lb. Bond
Capacity	100 sheets

Options

RT43 Large Capacity Tray (LCT)	
Paper Size	8.5" x 11" LEF
Paper Weight	14 – 34 lb. Bond
Paper Capacity	4,000 sheets (20 lb. Bond)
Dimensions (WxDxH)	12.4" x 18.0" x 25.9"
8.5" x 14" Paper Size Tray Type 1075	
Enables legal-size (8.5" x 14") paper to be fed through LCT.	
Paper Size	8.5" x 14", 8.5" x 11" SEF
Paper Capacity	2,500 sheets (20 lb. Bond)
CS391 9-bin Mailbox	
Compatible with SR970 and SR4000 Finishers.	
Number of Bins	9
Stack Capacity	100 sheets/bin (20 lb. Bond)
Paper Size	5.5" x 8.5" – 11" x 17"
Copy Tray Type 2075	
Receives output when device is not configured with a finisher.	
Paper Capacity	500 sheets (8.5" x 11"), 250 sheets (8.5" x 14", 11" x 17")
11" x 17" Tray Type 1075	
Enables 11" x 17" and 8.5" x 14" paper to be fed from Tray 1. Without this option, Tray 1 only accepts 8.5" x 11".	
Paper Size	11" x 17" SEF, 8.5" x 14" SEF, 8.5" x 11" SEF
Paper Capacity	1,000 sheets
Tab Sheet Holder Type 3260	
Enables tab stock to be fed from Tray 2 or Tray 3.	
Capacity	100 sheets
Cover Interposer Tray Type 3260	
Compatible with all three finishers.	
Paper Size	5.5" x 8.5" – 11" x 17"
Paper Weight	17 lb. Bond – 110 lb. Index (216 g/m ²)
Paper Capacity	200 sheets (20 lb. Bond)

Z-Folding Unit Type ZF4000

Compatible only with SR842 and SR4000 Finishers.	
Z-Folding Positions	Right, left, bottom
Paper Size	8.5" x 11" SEF, 8.5" x 14" SEF, 11" x 17" SEF
Paper Weight	17 lb. – 20 lb. Bond
SR4000 2,000-sheet Finisher with Saddle Stitch	
Proof Tray	
Paper Size	5.5" x 8.5" – 11" x 17" SEF, 12" x 18" SEF
Paper Weight	14 lb. Bond – 90 lb. Index (163 g/m ²)
Stack Capacity	250 sheets (8.5" x 11" or smaller), 50 sheets (8.5" x 14" or larger) 30 sheets (Z-fold/8.5" x 14" or larger) 20 sheets (Z-fold/8.5" x 11" or smaller)
Shift Tray	
Paper Size	5.5" x 8.5" – 11" x 17" SEF, 12" x 18" SEF
Paper Weight	14 lb. Bond – 110 lb. Index (216 g/m ²)
Stack Capacity	2,000 sheets (8.5" x 11" LEF) 1,000 sheets (8.5" x 11" SEF, 8.5" x 14" SEF, 11" x 17" SEF, 12" x 18" SEF) 100 sheets (5.5" x 8.5" SEF) 30 sheets (Z-fold/8.5" x 14" or larger) 20 sheets (Z-fold/8.5" x 11" or smaller)

Staple Capacity

Same Paper Size	50 sheets (8.5" x 11" or smaller) 30 sheets (8.5" x 14" or larger) 30 sheets (8.5" x 11", 11" x 17")
Mixed Paper Size	5 sheets
Z-Fold Paper Only	15 sheets (8.5" x 11" SEF, 8.5" x 14" SEF, 11" x 17" SEF)
Saddle Stitch	Top, bottom, 2 staples, top slant 1 sheet

Staple Position

Center Folding	
w/o Saddle Stitch	
Dimensions (WxDxH)	25.9" x 24.1" x 37.8"

Punch Unit Type 3260

Hole Positions	2 or 3 holes
Paper Size	5.5" x 8.5" – 11" x 17"
Paper Weight	14 lb. Bond – 90 lb. Index (163 g/m ²)

Output Jogger Unit Type 3260

Secures each finished set in an orderly fashion.

SR842 3,000-sheet Finisher w/100-sheet Stapler

Proof Tray	
Paper Size	5.5" x 8.5" – 11" x 17" SEF, 12" x 18" SEF
Paper Weight	14 lb. Bond – 110 lb. Index (216 g/m ²)
Stack Capacity	500 sheets (8.5" x 11" or smaller), 250 sheets (8.5" x 14" or larger) 30 sheets (Z-fold)
Shift Tray	
Paper Size	5.5" x 8.5" – 11" x 17" SEF, 12" x 18" SEF
Paper Weight	14 lb. Bond – 110 lb. Index (216 g/m ²)
Stack Capacity	3,000 sheets (8.5" x 11" LEF) 1,500 sheets (8.5" x 11" SEF, 8.5" x 14" SEF, 11" x 17" SEF) 500 sheets (5.5" x 8.5" LEF) 100 sheets (5.5" x 8.5" SEF) 30 sheets (Z-fold)

Staple Capacity

Same Paper Size	100 sheets (8.5" x 11") 50 sheets (8.5" x 14", 11" x 17") 50 sheets (8.5" x 11" LEF, 11" x 17" SEF)
Mixed Paper Size	10 sheets
Z-Fold Paper Only	Top, top slant, bottom, 2 staples
Staple Positions	Top, top slant, bottom, 2 staples
Dimensions (WxDxH)	31.5" x 28.7" x 38.6"

Punch Unit Type 1075

Hole Positions	2 or 3 holes
Paper Size	5.5" x 8.5" – 11" x 17"
Paper Weight	14 lb. – 34 lb. Bond
GBC StreamPunch III	
Paper Size	8.5" x 11" LEF
Paper Weight	20 lb. Bond – 110 lb. Index (216 g/m ²)
Die Sets	CombBind®, Twin Loop wire (2:1 or 3:1), ColorCoil®, VeloBind®, Three-Ring, ProClick®

BK5010 Production Booklet Maker

Paper Size	8.5" x 11" – 11" x 17"
Paper Weight	16 lb. Bond – 110 lb. Index (216 g/m ²)

Output Jogger Unit Type 1075

Secures each finished set in an orderly fashion.

SR970 3,000-sheet Finisher w/50-sheet Stapler

Proof Tray	
Paper Size	5.5" x 8.5" – 11" x 17" SEF, 12" x 18" SEF
Paper Weight	14 lb. Bond – 90 lb. Index (163 g/m ²)
Stack Capacity	250 sheets (8.5" x 11" or smaller), 50 sheets (8.5" x 14" or larger)

Shift Tray

Paper Size	5.5" x 8.5" – 11" x 17" SEF, 12" x 18" SEF
Paper Weight	14 lb. Bond – 110 lb. Index (216 g/m ²)
Stack Capacity	3,000 sheets (8.5" x 11" LEF); 1,500 sheets (8.5" x 11" SEF, 8.5" x 14" SEF, 11" x 17" SEF, 12" x 18" SEF) 100 sheets (5.5" x 8.5" SEF)

Staple Capacity

Same Paper Size	50 sheets (8.5" x 11" or smaller) 30 sheets (8.5" x 14" or larger) 30 sheets (8.5" x 11" LEF, 11" x 17" SEF)
Mixed Paper Size	Top, bottom, 2 staples, top slant
Staple Positions	Top, bottom, 2 staples, top slant
Dimensions (WxDxH)	25.9" x 24.1" x 37.8"

Punch Unit Type 3260

Hole Positions	2 or 3 holes
Paper Size	5.5" x 8.5" – 11" x 17"
Paper Weight	14 lb. Bond – 90 lb. Index (163 g/m ²)

Output Jogger Unit Type 3260

Secures each finished set in an orderly fashion.

Print Controller Specifications

Print Speed	MP 5500: 55 prints/minute MP 6500: 65 prints/minute MP 7500: 75 prints/minute
CPU	Intel Celeron LV 866 MHz
Host Interface	Standard: 10Base-T Ethernet/100Base-TX Ethernet, USB 2.0 Optional: IEEE 1284 (Parallel), IEEE 802.11b (Wireless LAN), IEEE 1394, Bluetooth, 1000Base-T Ethernet
Network Protocol	TCP/IP, IPX/SPX, SMB, AppleTalk
Memory Capacity	512MB DDR-SDRAM
PDL	Standard: RPCS, PCL5e, PCL6 Optional: Adobe PostScript 3
Print Resolution	PCL5e: 300/600 dpi PCL6: 600/1200 dpi PS 3: 600/1200 dpi RPCS: 300/600/1200 dpi
Drivers	PCL5e/PCL6: Windows 9x/ME/NT 4.0/2000/XP/Server 2003 RPCS: Windows 9x/ME/NT 4.0/2000/XP/Server 2003 PS 3: Windows 9x/ME/NT 4.0/2000/XP/Server 2003, Macintosh OS 8.6 and later, Mac OS X Classic, Mac OS X Native v. 10.1 and later

Scanner Specifications

Scan Speed	75 sides/minute (200 dpi)
Optical Resolution	100 dpi – 600 dpi (100 – 1200 dpi with TWAIN)
Output Format	TIFF (Multi/Single), JPEG, PDF (Multi/Single)
Interface Support	Standard: 10Base-T Ethernet/100Base-TX Ethernet; Optional: IEEE 802.11b, IEEE 1394, 1000Base-T Ethernet
Bundled Drivers	Network TWAIN
Scan-to-Email	Yes (up to 500 addresses per send)
LDAP Support	Yes (Version 3)
Max Stored	2,000
Destinations	
Authentication	SMTP/POP before SMTP
Scan-to-Folder	Yes (up to 50 folders per job)
Protocol Support	SMB, FTP, NCP

Print speeds may be impacted by network, applications or PC performance. Specifications and external appearances are subject to change without notice. Products are shown with optional features. For maximum performance and yield, we recommend using genuine Ricoh parts and supplies.

RICOH

www.ricoh-usa.com

Ricoh Corporation, Five Dedrick Place, West Caldwell, NJ 07086

Ricoh® and the Ricoh Logo are registered trademarks of Ricoh Company, Ltd. Windows® and Windows® 95/98/Me/NT4.0/2000/XP are registered trademarks of Microsoft Corporation. Macintosh®, Mac® OS and AppleTalk® are registered trademarks of Apple Computer, Inc. Adobe® and PostScript® are registered trademarks of Adobe Systems, Inc. PCL® is a registered trademark of Hewlett-Packard Company. RPCS™ is a trademark of Ricoh Company, Ltd. All other trademarks are the property of their respective owners. Printed in U.S.A. on recycled paper. Print speed may be affected by network, application or PC performance. Specifications and external appearances are subject to change without notice. Products are shown with optional features.

Printed in U.S.A. on recycled paper because Ricoh cares.

CA-0527

